

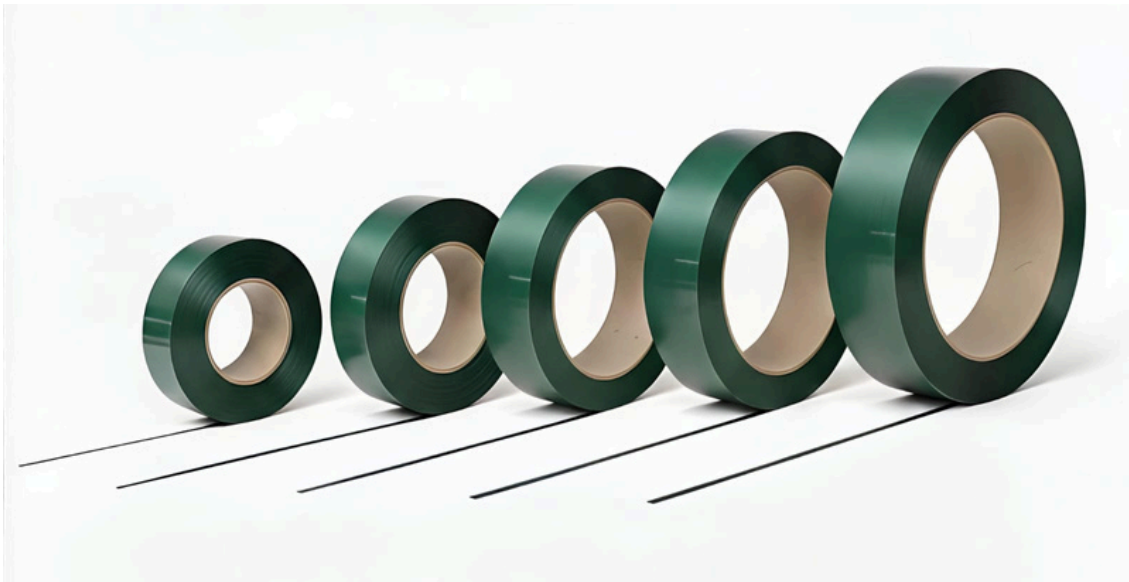


GREENSTRIX

PET Strapping

Size-Wise Applications & Usage

Export-Grade PET & rPET Strapping Solutions



Quality

International Standards



Customisation

Size, Thickness & Finish



Export-Ready

containerized shipping

Greenstrix • Surat, Gujarat, India

www.greenstrix.com



Product Overview

What is PET Strapping?

Polyethylene Terephthalate (PET) based strapping material with high tensile strength and flexibility, designed for industrial packaging and export applications.

vs Steel **Key Benefits**

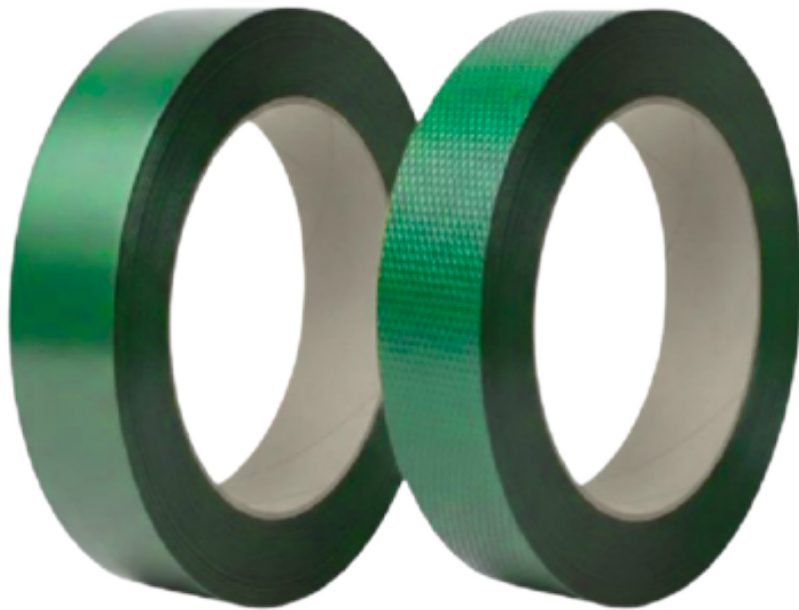
- No rust or corrosion
- Lighter weight
- Shock absorption
- Fully recyclable

Shipping **Export Ready**

- Sea freight suitable
- Weather-resistant
- International compliant
- Reduces weight

Types **Material Options**

- Virgin PET
- rPET (Recycled)
- Multiple widths
- Custom finishes





Material Application

Industries We Serve



E-Commerce & Retail

- Online packageshipping
- Retail box bundling
- Multi-pack consolidation



Food & Beverage

- Beverage case bundling
- Food productpackaging
- Frozen food packaging



Pharmaceutical

- Medicine box bundling
- Medical devicepackaging
- Healthcare shipments



Consumer Goods

- Electronics packaging
- Appliance bundling
- Gift packaging



Heavy Industry

- Steel & metal products
- Construction materials
- Paper & carton plants



Logistics & Export

- Warehouse operations
- Container loading
- Freight forwarding

Widely Used in High-Volume Industrial Packaging & Export Logistics

Where load stability and consistency are critical for global supply chains



PET Strap

12 mm

Thickness
0.60 - 0.70 mm

Load Type
Light to Medium

Industries

E-commerce, food packaging, small appliances, stationery

Typical Applications

- Small cartons and boxes
- Lightweight bundles
- Document packages
- Light consumer goods
- Domestic/light export

Technical Highlights

- ✓ Tensile strength: 180-220 kg
- ✓ Light to medium loads
- ✓ Manual & battery tools
- ✓ Ideal for FMCG, e-commerce

Compatible Tools

Manual hand tools

Battery-operated strapping tools





PET Strap

15 - 16 mm

Thickness
0.60 - 1.00 mm

Load Type
Medium

Industries

General packaging, Logistics, Automotive parts, Machinery components

Typical Applications

- Standard cartons and boxes
- Bundled products
- Moderate-weight packages
- Palletised goods

Technical Highlights

- ✓ Higher breaking strength
- ✓ Stable tension retention
- ✓ Suitable for pallets
- ✓ Medium-weight exports

Compatible Tools

Manual tools,

Battery-operated tools

Pneumatic tools





PET Strap

19 mm

Thickness
0.80 - 1.00 mm

Load Type
Medium to Heavy

Industries

Heavy machinery, Industrial equipment, Construction materials large appliances

Typical Applications

- Heavy cartons and boxes
- Large, bundled products
- Industrial equipment
- Export-grade pallets

Technical Highlights

- ✓ Medium to heavy loads
- ✓ High joint efficiency
- ✓ Sea freight-suitable
- ✓ Pneumatic & automatic

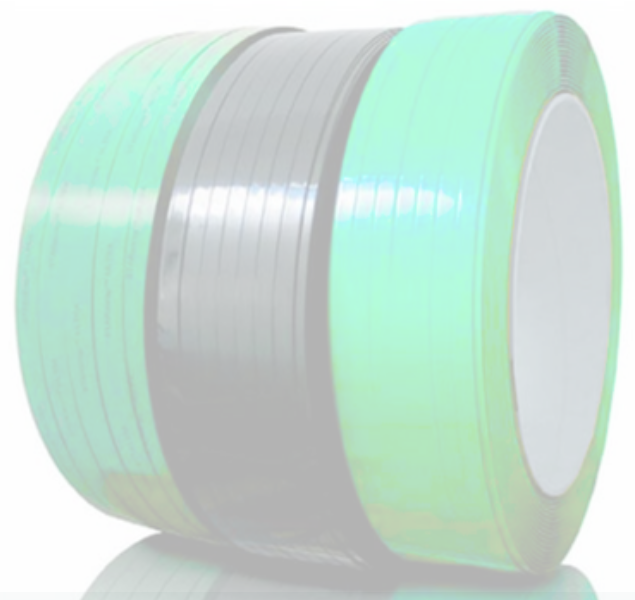
Compatible Tools

Manual tools,

Battery-operated tools

Pneumatic tools

Automatic machines





PET Strap

25 mm

Thickness
1.00 - 1.27 mm

Load Type
Heavy to Extra Heavy

Industries

Heavy machinery, Industrial equipment, Steel products large appliances, Export logistics

Typical Applications

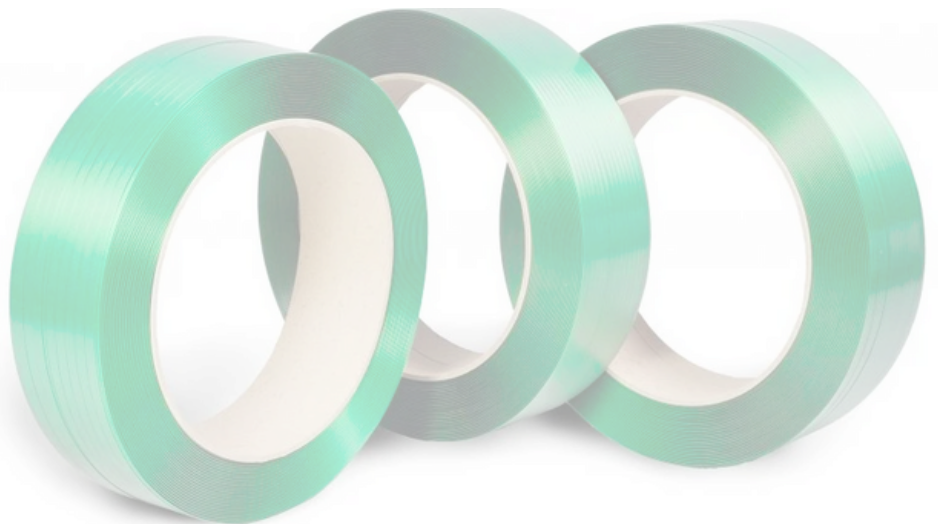
- Extra-heavy cartons
- Large industrial bundles
- Heavy machinery packaging
- Large pallet shipments
- Container-grade

Technical Highlights

- ✓ Extra-heavy & oversized loads
- ✓ High tensile & impact resistance
- ✓ Steel products, coils, machinery
- ✓ Long-distance export

Compatible Tools

Pneumatic tools,
Automatic strapping machines,
Heavy-duty manual tools





PET Strap

32 mm

**Thickness
1.27 mm**

**Load Type
Extra Heavy**

Industries

Heavy machinery, Industrial equipment, Steel products, Container Shipping

Typical Applications

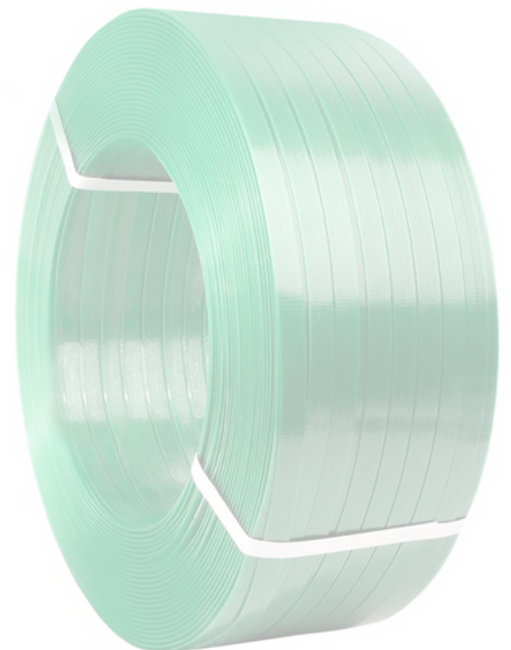
- Extra-large industrial bundles
- Heavy machinery packaging
- Large container shipments
- Heavy-duty pallets
- Coil packaging

Technical Highlights

- ✓ Maximum load capacity
- ✓ Highest tensile strength
- ✓ Container shipping grade
- ✓ Heavy-duty automatic

Compatible Tools

Pneumatic tools,
Automatic strapping machines,
Heavy-duty manual tools





Tools & Equipment

Manual Tools

- Hand strapping tools
- Tensioning devices
- Sealing tools
- Portable equipment

Battery Operated

- Cordless machines
- Portable tensioners
- Handheld sealers
- Mobile solutions

Pneumatic Tools

- Air-powered machines
- Pneumatic tensioners
- Industrial sealers
- High-speed lines

Automatic Machines

- Fully automated systems
- Integrated packaging
- Container strapping
- High-volume production

Size-to-Machine Mapping

12 - 16 mm

Manual & Battery Tools

16 - 19 mm

Battery & Pneumatic

19 - 32 mm

Pneumatic & Automatic





Customisation Options

Core ID (Inner Diameter)

- Standard: 16"(406mm)
- Custom sizes available
- Machine compatible

Embossing Options

- Smooth finish
- Embossed patterns
- Enhanced grip

Pneumatic Tools

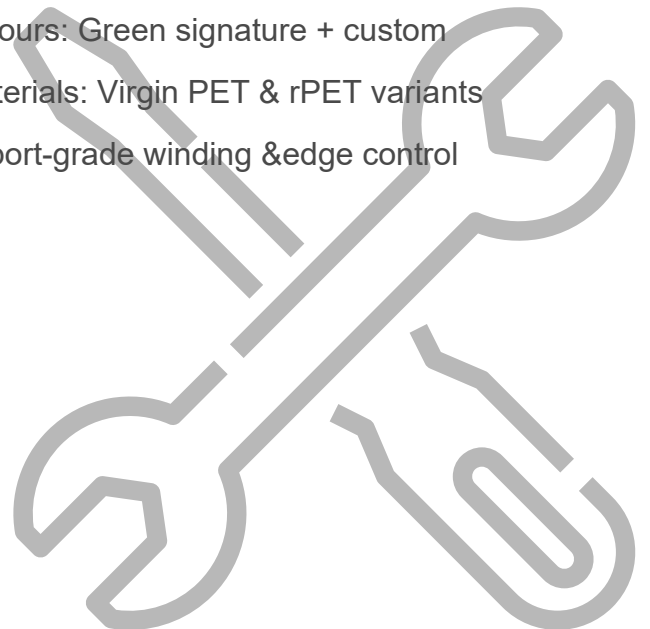
- Green(signature, UV resistant)
- Custom Colours available
- Brand-matching

Automatic Machines

- Standard / High-Gloss / Matte
- Anti-Slip finish
- Premium appearance

Complete Specification Summary

- ✓ Width range: 12 mm – 32 mm
- ✓ Thickness tolerance: ± 0.05 mm
- ✓ Elongation: 10-20%
- ✓ Core ID: 406 mm (16") standard
- ✓ Surface: Embossed & smooth options
- ✓ Colours: Green signature + custom
- ✓ Materials: Virgin PET & rPET variants
- ✓ Export-grade winding & edge control





Product Specifications

| Product Code | Width (mm) (± 0.6 mm) | Thickness (mm) (± 0.07 mm) | Plain / Smooth | | Embossed | |
|---------------|--------------------------|-------------------------------|----------------|----------------|------------|----------------|
| | | | Length (M) | Strength (KOF) | Length (M) | Strength (KOF) |
| GS-PET 120050 | 12 | 0.5 | 2565 | 195 | 2625 | 186 |
| GS-PET 120060 | 12 | 0.6 | 2135 | 230 | 2190 | 220 |
| GS-PET 120070 | 12 | 0.7 | 1830 | 270 | 1875 | 260 |
| GS-PET 125050 | 12.5 | 0.5 | 2460 | 200 | 2520 | 190 |
| GS-PET 125070 | 12.5 | 0.7 | 1760 | 280 | 1800 | 270 |
| GS-PET 150070 | 15 | 0.7 | 1465 | 370 | 1500 | 357 |
| GS-PET 150080 | 15 | 0.8 | 1280 | 420 | 1310 | 408 |
| GS-PET 150090 | 15 | 0.9 | 1140 | 475 | 1165 | 460 |
| GS-PET 155070 | 15.5 | 0.7 | 1420 | 380 | 1450 | 370 |
| GS-PET 160060 | 16 | 0.6 | 1600 | 335 | 1640 | 325 |
| GS-PET 160070 | 16 | 0.7 | 1375 | 390 | 1400 | 380 |
| GS-PET 160080 | 16 | 0.8 | 1200 | 450 | 1230 | 435 |
| GS-PET 160100 | 16 | 1 | 960 | 560 | 985 | 545 |
| GS-PET 190080 | 19 | 0.8 | 1010 | 530 | 1035 | 515 |
| GS-PET 190100 | 19 | 1 | 810 | 665 | 830 | 650 |
| GS-PET 190127 | 19 | 1.27 | 635 | 850 | 650 | 820 |
| GS-PET 250100 | 25 | 1 | 615 | 875 | 630 | 850 |
| GS-PET 250127 | 25 | 1.27 | 485 | 1150 | 495 | 1100 |
| GS-PET 320127 | 32 | 1.27 | 380 | 1500 | 387 | 1400 |

**Break Strength values may vary based on strap Width, Thickness and Production Tolerance*



GREENSTRIX

PET Strapping for International Export

Quality • Reliability • Performance


Why Choose Greenstrix

- ✓ Consistent quality aligned with international packaging standards
- ✓ Customization: size, thickness & finish as per buyer requirements
- ✓ Export-ready packing for containerised shipments

Contact Information

Rajesh Kukadiya

(Export & Business Development Executive)

 (+91) 9090603966

Jaimin Patel

(Sales & Partnerships Co-ordinator)

 (+49) 176 85614141

Address:

701, SNS Platina
Near Someshwara Enclave,
Vesu, Surat 395007



sales@greenstrix.com



www.greenstrix.com

**Contact
us**